

26GHz WIPAS

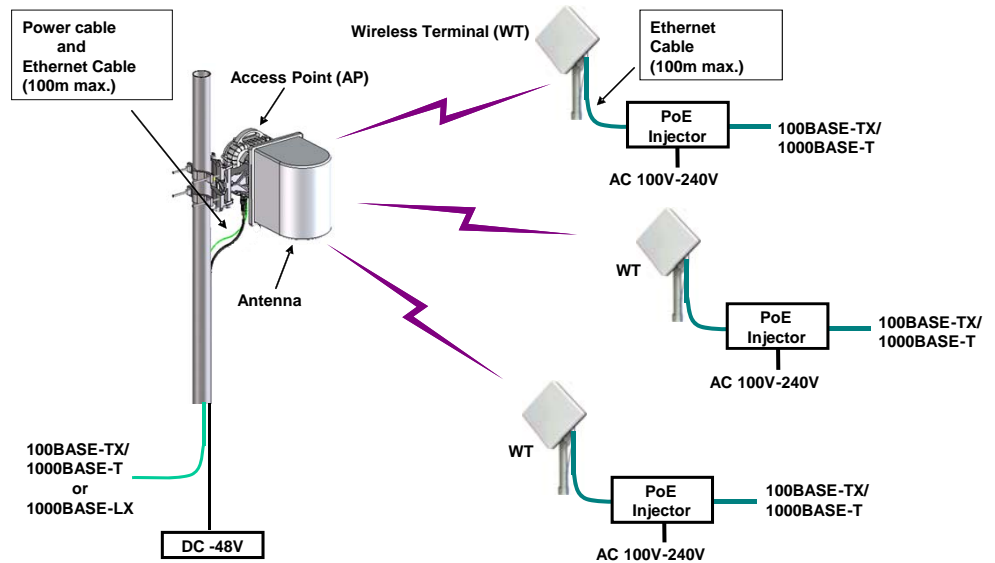
[Wireless IP Access System]

24–26.5GHz Band TDD Packet Radio

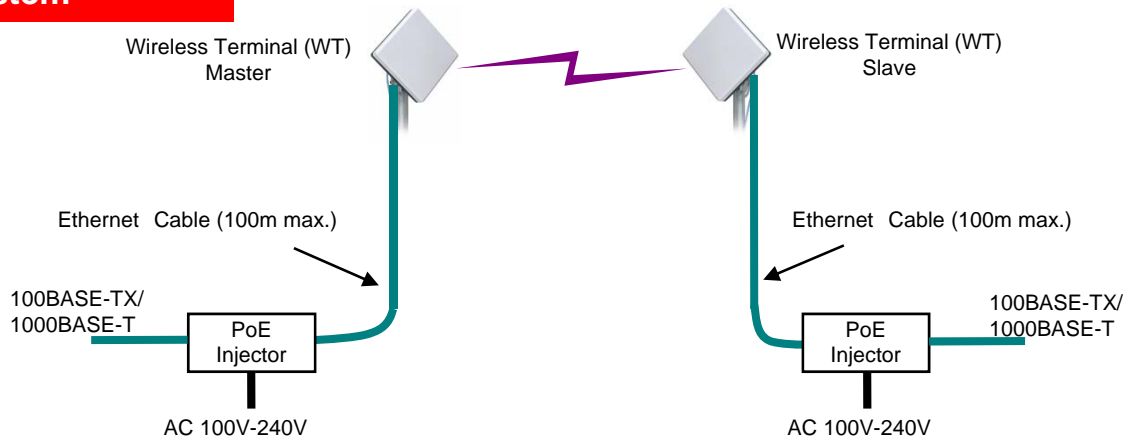
Features

- 28/56MHz RF channel spacing of ETSI and FCC compliant
- Adaptive modulation (QPSK to 64QAM) and QoS support for maximizing spectrum utilization and radio link availability
- 180Mbps data throughput (aggregated downlink and uplink)
- Flexible Downlink and Uplink ratio
- Full QoS support for triple play services
- Encryption by Camellia (128bit)
- Zero-footprint and small size
- Management tool for fault, configuration, performance, and security
- Flexible configuration of PMP and PP network using same WT equipment
- High reliability – Field MTBF of previous model is better than 1 million hours for AP and WT

PMP system



PP system



26GHz WIPAS

[Wireless IP Access System]

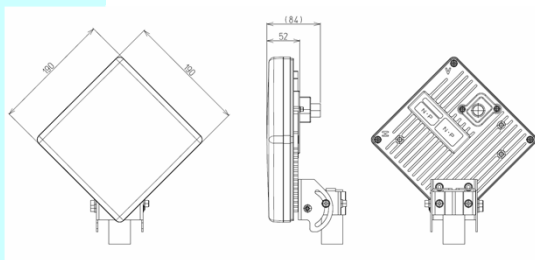
24-26.5GHz Band TDD Packet Radio

Specifications

| Item | | Description | |
|--|-------|---|--|
| Frequency Coverage | | FCC Band 24.050-24.549GHz Model ETSI and FCC Band 24.549-25.445GHz Model ETSI Band 25.557-26.453GHz Model | |
| Duplex | | TDD (Flexible DL / UL Ratio) | |
| Channel Spacing | | 28MHz | 56MHz |
| Modulation | | QPSK, 16QAM, 64QAM (Adaptive Modulation or Fixed) | |
| Radio Transmission Rate Data Throughput (aggregated DL and UL) | | 40/80/120Mbps 30/60/90Mbps (QPSK/16QAM/64QAM) | 80/160/240Mbps 60/120/180Mbps (QPSK/16QAM/64QAM) |
| Transmit Output Power | QPSK | AP +20dBm / WT+14dBm | |
| | 16QAM | AP +17.5dBm / +11.5dBm | |
| | 64QAM | AP +16.3dBm / +10.3dBm | |
| Receiver Sensitivity at Antenna Port | QPSK | -83 dBm | -80 dBm |
| | 16QAM | -76 dBm | -73 dBm |
| | 64QAM | -69 dBm | -66 dBm |
| Encryption | | Camellia*1 128bit | |
| Cable Length | | 100m (for data and power) | |
| Operating Temperature Range | | -33°C to +50°C | |

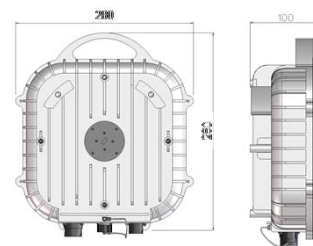
Note*1:"Camellia" is a registered trademark of Nippon Telegraph and Telephone Corporation (NTT) and Mitsubishi Electric Corporation.

WT Mechanical Structure



| | |
|-----------|----------------------|
| Size | 190x190x52mm (HxWxD) |
| Weight | 1.7kg |
| Interface | 1 x 100/1000BASE-T |
| Powering | IEEE802.3at PoE |

AP Mechanical Structure



| | |
|-----------|---|
| Size | 280x280x100mm (HxWxD) |
| Weight | 6.0kg |
| Interface | 1 x 100/1000BASE-T or 1 x 1000BASE-LX |
| Powering | PoE (non-standard) or -48V DC (2-core cable) |

Antenna Mounting Examples



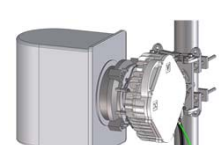
Standard Type WT
(Built-in antenna)



External Antenna Type WT
with 30cm antenna



External Antenna Type WT
with 60cm antenna



AP with external Antenna

Specification may be subject to be change without notice.

Contact us

telecom@jrcamerica.com